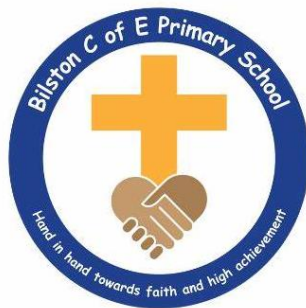


# **BILSTON CHURCH OF ENGLAND PRIMARY SCHOOL Online Safety Policy**



## **Key Details**

**Designated Safeguarding Lead (s): (Mr G Gentle and Mrs J Thornton)**

**Named Governor with lead responsibility: (Mrs Beverly Momenabadi)**

**Date written: (5.6.21)**

**Date agreed and ratified by Governing Body: (6.7.21)**

**Date of next review: (6.6.22)**

This policy will be reviewed **at least** annually. It will also be revised following any concerns and/or updates to national and local guidance or procedures.

# Contents

	<b>Page no</b>
<b>Online Safety Policy Template Content</b>	
Using the Policy Template: Guidance Notes	p.4
1. Policy Aims	p.6
2. Policy Scope	p.6
2.2 Links with other policies and practices	p.7
3. Monitoring and Review	p.7
4. Roles and Responsibilities	p.7
4.1 The leadership and management team	p.8
4.2 The Designated Safeguarding Lead	p.8
4.3 Members of staff	p.9
4.4 Staff who manage the technical environment	p.10
4.5 Learners	p.10
4.6 Parents	p.10
5. Education and Engagement Approaches	p.11
5.1 Education and engagement with learners	p.11
5.2 Vulnerable Learners	p.12
5.3 Training and engagement with staff	p.12
5.4 Awareness and engagement with parents	p.13
6. Reducing Online Risks	p.13
7. Safer Use of Technology	p.14
7.1 Classroom Use	p.14
7.2 Managing Internet Access	p.15
7.3 Filtering and Monitoring	p.15
7.4 Managing Personal Data Online	p.17
7.5 Security and Management of Information Systems	p.17
7.6 Managing the Safety of the Website	p.18
7.7 Publishing Images and Videos Online	p.18
7.8 Managing Email	p.18
7.9 Educational use of Videoconferencing and/or Webcams	p.19
7.10 Management of Learning Platforms	p.20
7.11 Management of Applications (apps) used to Record Learners Progress	p.21
8. Social Media	p.21
8.1 Expectations	p.21
8.2 Staff Personal Use of Social Media	p.22
8.3 Learners Personal Use of Social Media	p.23
8.4 Official Use of Social Media	p.24
9. Mobile Technology: Use of Personal Devices and Mobile Phones	p. 25
9.1 Expectations	p.25
9.2 Staff Use of Personal Devices and Mobile Phones	p.26

9.3 Learners Use of Personal Devices and Mobile Phones	p.27
9.4 Visitors' Use of Personal Devices and Mobile Phones	p.28
9.5 Officially provided mobile phones and devices	p.28
10. Responding to Online Safety Incidents and Concerns	p.28
10.1 Concerns about learner online behaviour and/or welfare	p.29
10.2 Concerns about staff online behaviour and/or welfare	p.29
10.3 Concerns about parent/carer online behaviour and/or welfare	p.29
11. Procedures for Responding to Specific Online Incidents or Concerns	p.30
11.1 Online Sexual Violence and Sexual Harassment between Children	p.30
11.2 Youth Produced Sexual Imagery or "Sexting"	p.31
11.3 Online abuse and exploitation (including child sexual abuse and sexual or criminal exploitation)	p.32
11.4 Indecent Images of Children (IIOC)	p.34
11.5 Cyberbullying	p.35
11.6 Online Hate	p.35
11.7 Online Radicalisation and Extremism	p.35
Responding to an Online Safety Concern Flowchart	p.36
Useful Links for Educational Settings	p.37

# Bilston C of E Primary School Online Safety Policy

## 1. Policy Aims

- This online safety policy has been written by **Bilston C of E Primary School**, involving staff, learners and parents/carers, building on the Kent County Council/The Education People online safety policy template, with specialist advice and input as required.
- It takes into account the DfE statutory guidance '[Keeping Children Safe in Education](#)' 2019, [Early Years and Foundation Stage](#) 2017 '[Working Together to Safeguard Children](#)'
- The purpose of **Bilston C of E Primary School's** online safety policy is to
  - safeguard and promote the welfare of all members of Bilston C of E Primary School's community online.
  - identify approaches to educate and raise awareness of online safety throughout our community.
  - enable all staff to work safely and responsibly, to role model positive behaviour online and to manage professional standards and practice when using technology.
  - identify clear procedures to follow when responding to online safety concerns.
- **Bilston C of E Primary School** identifies that the issues classified within online safety are considerable but can be broadly categorised into three areas of risk.
  - **Content:** being exposed to illegal, inappropriate or harmful material
  - **Contact:** being subjected to harmful online interaction with other users
  - **Conduct:** personal online behaviour that increases the likelihood of, or causes, harm.

## 2. Policy scope

- **Bilston C of E Primary School** recognises that online safety is an essential part of safeguarding and acknowledges its duty to ensure that all learners and staff are protected from potential harm online.
- **Bilston C of E Primary School** identifies that the internet and associated devices, such as computers, tablets, mobile phones and games consoles are an important part of everyday life which present positive and exciting opportunities, as well as challenges and risks.
- **Bilston C of E Primary School** will empower our learners to acquire the knowledge needed to use the internet and technology in a safe, considered and respectful way, and develop their resilience so they can manage and respond to online risks.
- This policy applies to all staff, including the governing body, leadership team, teachers, support staff, external contractors, visitors, volunteers and other individuals who work for, or provide

services on behalf of the setting (collectively referred to as “staff” in this policy) as well as learners and parents and carers.

- This policy applies to all access to the internet and use of technology, including mobile technology, or where learners, staff or other individuals have been provided with setting issued devices for use, both on and off-site.

## 2.2 Links with other policies and practices

- This policy links with several other policies, practices and action plans, including but not limited to:
  - Anti-bullying policy
  - Acceptable Use Policies (AUP) and/or the Code of conduct/staff behaviour policy
  - Behaviour and discipline policy
  - Child protection policy & Safeguarding
  - Confidentiality policy
  - Curriculum policies, such as: Computing, Personal Social and Health Education (PSHE), Citizenship and Relationships and Sex Education (RSE)
  - Data security (GDPR)
  - Cameras and image use policy
  - Mobile phone and social media policies
  - Searching, screening and confiscation policy

## 3. Monitoring and review

- Technology evolves and changes rapidly; as such [Bilston C of E Primary School](#) will review this policy at least annually. The policy will be revised following any national or local policy updates, any local child protection concerns and/or any changes to our technical infrastructure.
- We will regularly monitor internet use and evaluate online safety mechanisms to ensure that this policy is consistently applied.
- To ensure they have oversight of online safety, the [Headteacher](#) will be informed of online safety concerns, as appropriate.
- The named governor for safeguarding will report on online safety practice and incidents, including outcomes, on a regular basis to the wider governing body.
- Any issues identified via monitoring policy compliance will be incorporated into our action planning.

## 4. Roles and Responsibilities

- The Designated Safeguarding Lead (DSL) (Mr G Gentle) is recognised as holding overall lead responsibility for online safety.

- [Bilston C of E Primary School](#) recognises that all members of the community have important roles and responsibilities to play with regards to online safety.

#### 4.1 The leadership and management team will:

- Create a whole setting culture that incorporates online safety throughout all elements of *school* life.
- Ensure that online safety is viewed as a safeguarding issue and that practice is in line with national and local recommendations and requirements.
- Implement appropriate and up-to-date policies regarding online safety which addresses the acceptable use of technology, peer on peer abuse, use of social media and mobile technology.
- Work with technical staff and IT support ([E Services](#)) to ensure that suitable and appropriate filtering and monitoring systems are in place.
- Support the DSL and any deputies by ensuring they have enough time and resources to carry out their responsibilities.
- Ensure robust reporting channels are in place for the whole community to access regarding online safety concerns.
- Undertake appropriate risk assessments regarding the safe use of technology on site.
- Audit and evaluate online safety practice to identify strengths and areas for improvement.
- Ensure that staff, learners and parents/carers are proactively engaged in activities which promote online safety.
- Support staff to ensure that online safety is embedded within a progressive whole setting curriculum which enables all learners to develop an appropriate understanding of online safety.

#### 4.2 The Designated Safeguarding Lead (DSL) will:

- Act as a named point of contact within the setting on all online safeguarding issues.
- Liaise with other members of staff, such as pastoral support staff, IT technicians, network managers and the SENCO on matters of online safety.
- Ensure appropriate referrals are made to relevant external partner agencies, as appropriate.
- Work alongside deputy DSLs to ensure online safety is recognised as part of the settings safeguarding responsibilities, and that a coordinated whole [school](#) approach is implemented.
- Access regular and appropriate training and support to ensure they understand the unique risks associated with online safety and have the relevant and up-to-date knowledge required to keep learners safe online.
- Access regular and appropriate training and support to ensure they recognise the additional risks that learners with SEN and disabilities (SEND) face online.
- Ensure all members of staff receive regular, up-to-date and appropriate online safety training and information as part of their induction and child protection training.
- Keep up to date with current research, legislation and trends regarding online safety and communicate this with the community, as appropriate.

- Work with staff to coordinate participation in local and national events to promote positive online behaviour, such as Safer Internet Day.
- Ensure that online safety is promoted to parents, carers and the wider community through a variety of channels and approaches.
- Maintain records of online safety concerns, as well as actions taken, as part of the settings safeguarding recording mechanisms.
- Monitor online safety incidents to identify gaps and trends and use this data to update the education response and *school* policies and procedures.
- Report online safety concerns, as appropriate, to the *school* management team and Governing Body. ***Also add any incidents to CPOMS our school recording system.***
- Work with the leadership team to review and update online safety policies on a regular basis (at least annually) with stakeholder input.
- Meet termly with the governor with a lead responsibility for safeguarding *and* online safety.
- Steering group to also meet annually or more frequently if required if any issues arise.
  - Mrs D Robinson
  - Miss B Momenabadi
  - Mr M Price
  - Miss H Mitchell
  - Reverend Simon Skidmore
  - Mrs L Palmer
  - Mrs E Hall
  - Miss K Parton
  - Digital Ambassadors (Year 5/6)

#### 4.3 It is the responsibility of all members of staff to:

- Contribute to the development of our online safety policies.
- Read and adhere to our online safety policy and acceptable use of technology policies.
- Take responsibility for the security of IT systems and the electronic data they use or have access to.
- Model good practice when using technology with learners
- Maintain a professional level of conduct in their personal use of technology, both on and off site.
- Embed online safety education in curriculum delivery wherever possible.
- Have an awareness of a range of online safety issues and how they may be experienced by the learners in their care.
- Identify online safety concerns and take appropriate action by following the *schools* safeguarding policies and procedures.
- Know when and how to escalate online safety issues, including reporting to the DSL and signposting learners and parents/carers to appropriate support, internally and externally.
- Take personal responsibility for professional development in this area.

#### **4.4 It is the responsibility of staff managing the technical environment to:**

- Provide technical support and perspective to the DSL and *school*/ leadership team, especially in the development and implementation of appropriate online safety policies and procedures.
- Implement appropriate security measures including as directed by the leadership team to ensure that the settings IT infrastructure is secure and not open to misuse or malicious attack, whilst allowing learning opportunities to be maximised.
- Ensure that our filtering policy and monitoring systems and approaches are applied and updated on a regular basis; responsibility for its implementation is shared with the leadership team.
- Ensure appropriate technical support and access to our filtering and monitoring systems is given to the DSL and/or deputies to enable them to take appropriate safeguarding action when required.

#### **4.5 It is the responsibility of learners (at a level that is appropriate to their individual age and ability) to:**

- Engage in age/ability appropriate online safety education.
- Contribute to the development of online safety policies.
- Read and adhere to the acceptable use of technology and behaviour policies.
- Respect the feelings and rights of others, on and offline.
- Take an appropriate level of responsibility for keeping themselves and others safe online.
- Seek help from a trusted adult, if they are concerned about anything, they or others experience online.

#### **4.6 It is the responsibility of parents and carers to:**

- Read our acceptable use of technology policies and encourage their children to adhere to them.
- Support our online safety approaches by discussing online safety issues with their children and reinforcing appropriate and safe online behaviours at home.
- Role model safe and appropriate use of technology and social media, Microsoft Teams and abide by the home-school agreement *and* acceptable use of technology policies.
- Seek help and support from the *school* or other appropriate agencies, if they or their child encounter online issues.
- Contribute to the development of our online safety policies.
- Use our systems, such as learning platforms, Teams and other IT resources, safely and appropriately.



- Take responsibility for their own awareness in relation to the risks and opportunities posed by the new and emerging technologies that their children access and use at home.
- 

## 5. Education and engagement approaches

### 5.1 Education and engagement with learners

- The setting will establish and embed a whole *school* culture and will raise awareness and promote safe and responsible internet use amongst learners by:
  - ensuring our curriculum and whole *school* approach is developed in line with the UK Council for Internet Safety (UKCIS) '[Education for a Connected World Framework](#)' and DfE '[Teaching online safety in school](#)' guidance.
  - ensuring online safety is addressed in Relationships Education, Relationships and Sex Education, Health Education, Citizenship and Computing programmes of study.
  - reinforcing online safety principles in other curriculum subjects as appropriate, and whenever technology or the internet is used on site.
  - implementing appropriate peer education approaches through Wider Learning and the Digital Ambassador project.
  - creating a safe environment in which all learners feel comfortable to say what they feel, without fear of getting into trouble and/or being judged for talking about something which happened to them online.
  - involving the DSL (or a deputy) as part of planning for online safety lessons or activities, so they can advise on any known safeguarding cases, and ensure support is in place for any learners who may be impacted by the content.
  - making informed decisions to ensure that any educational resources used are appropriate for our learners.
  - using external visitors, where appropriate, to complement and support our internal online safety education approaches. '[Using External Visitors to Support Online Safety Education: Guidance for Educational Settings](#)'
  - providing online safety education as part of the transition programme across the key stages and/or when moving between establishments.
  - rewarding positive use of technology through our Ambassador Annual Awards programme.
- [Bilston C of E Primary School](#) will support learners to understand and follow our acceptable use policies in a way which suits their age and ability by:
  - displaying acceptable use posters in all rooms with internet access.
  - informing learners that network and internet use will be monitored for safety and security purposes, and in accordance with legislation.
  - seeking learner voice when writing and developing online safety policies and practices, including curriculum development and implementation.

- Signing and discussing policies annually in classes as well as referring to them when required.

*Bilston C of E Primary School* will ensure learners develop the underpinning knowledge and behaviours needed to navigate the online world safely, in a way which suits their age and ability by:

- ensuring age appropriate education regarding safe and responsible use precedes internet access.
- teaching learners to evaluate what they see online and recognise techniques used for persuasion, so they can make effective judgements about if what they see is true, valid or acceptable.
- educating them in the effective use of the internet to research, including the skills of knowledge location, retrieval and evaluation.
- enabling them to understand what acceptable and unacceptable online behaviour looks like.
- preparing them to identify possible online risks and make informed decisions about how to act and respond.
- ensuring they know how and when to seek support if they are concerned or upset by something they see or experience online.

## 5.2 Vulnerable Learners

- *Bilston C of E Primary School* recognises that any learner can be vulnerable online, and vulnerability can fluctuate depending on their age, developmental stage and personal circumstances. However, there are some learners, for example looked after children and those with special educational needs, who may be more susceptible or may have less support in staying safe online.
- *Bilston C of E Primary School* will ensure that differentiated and appropriate online safety education, access and support is provided to vulnerable learners.
- Staff at *Bilston C of E Primary School* will seek input from specialist staff as appropriate, including the DSL, SENCO, Child in Care Designated Teacher to ensure that the policy and curriculum is appropriate to our community's needs.

## 5.3 Training and engagement with staff

- We will
  - provide and discuss the online safety policy and procedures with all members of staff as part of induction.
  - provide up-to-date and appropriate online safety training for all staff which is integrated, aligned and considered as part of our overarching safeguarding approach.
    - *Through annual meetings with P Flynn (Online Behaviours)*

- Staff training covers the potential risks posed to learners (content, contact and conduct) as well as our professional practice expectations.
- build on existing expertise by provide opportunities for staff to contribute to and shape our online safety approaches, including curriculum, policies and procedures.
- make staff aware that our IT systems are monitored, and that activity can be traced to individual users. Staff will be reminded to behave professionally and in accordance with our policies when accessing our systems and devices.
- make staff aware that their online conduct, including personal use of social media, can have an impact on their professional role and reputation.
- highlight useful educational resources and tools which staff could use with learners.
- ensure all members of staff are aware of the procedures to follow regarding online safety concerns involving learners, colleagues or other members of the community.

## 5.4 Awareness and engagement with parents and carers

- Bilston C of E Primary School recognises that parents and carers have an essential role to play in enabling children and young people to become safe and responsible users of the internet and associated technologies.
- We will build a partnership approach to online safety with parents and carers by
  - providing information and guidance on online safety in a variety of formats.
  - *Offering a Family Learning Approach to parents with online safety unit.*
  - drawing their attention to our online safety policy and expectations in our newsletters and other external communication (such as letters and social media channels) as well as in our prospectus and on our website/Class sites.
  - Keeping them informed of progress, information and key messages via MME.
  - requesting parents and carers read online safety information as part of joining our community, for example, within our home school agreement and our Teams AUP.
  - requiring them to read our acceptable use policies and discuss the implications with their children.
  - Working with parents to help them to understand and make the best of our remote learning resources as and when required.

## 6. Reducing Online Risks

- Bilston C of E Primary School recognises that the internet is a constantly changing environment with new apps, devices, websites and material emerging at a rapid pace.
- We will
  - regularly review the methods used to identify, assess and minimise online risks.
  - Examine emerging technologies for educational benefit and undertake appropriate risk assessments before their use in the *school* is permitted.
  - ensure that appropriate filtering and monitoring is in place and take all reasonable precautions to ensure that access is appropriate.

- recognise that due to the global and connected nature of the internet, it is not possible to guarantee that unsuitable material cannot be accessed via our systems or devices and as such identify clear procedures to follow if breaches or concerns arise.
- All members of the community are made aware of our expectations regarding safe and appropriate behaviour online and the importance of not posting any content, comments, images or videos which could cause harm, distress or offence. This is clearly outlined in our acceptable use of technology policies and highlighted through a variety of education and training approaches.

## 7. Safer Use of Technology

### 7.1 Classroom use

- Bilston C of E Primary uses a wide range of technology. This includes access to:
  - Computers, laptops, tablets and other digital devices
  - Internet, which may include search engines and educational websites
  - Teams
  - Shared Spaces to save work (T Drive)
  - Class Dojo
  - MME
  - Purple Mash
  - Activity Village (EAL)
  - Lexia
  - Email
  - Games consoles and other games-based technologies
  - Digital cameras, web cams and video cameras
- All setting owned devices will be used in accordance with our acceptable use of technology policies and with appropriate safety and security measures in place.
  - *Passwords are regularly changed and IPads devices wiped termly of photographs etc.*
- Members of staff will always evaluate websites, (particularly YouTube), tools and apps fully before use in the classroom or recommending for use at home.
- The setting will use appropriate search tools as identified following an informed risk assessment.
  - **Swiggle KS1**
  - **Google KS2**
- We will ensure that the use of internet-derived materials, by staff and learners complies with copyright law and acknowledge the source of information.
- Supervision of internet access and technology use will be appropriate to learners age and ability.
  - **Early Years Foundation Stage and Key Stage 1**
    - Access to the internet will be by adult demonstration, with occasional directly supervised access to specific and approved online materials, which supports the learning outcomes planned for the learners age and ability.

- **Key Stage 2**

- Learners will use age-appropriate search engines and online tools.
- Learners will be directed by the teacher to online materials and resources which support the learning outcomes planned for the learners age and ability.

## 7.2 Managing internet access

- We will maintain a written record of users who are granted access to our devices and systems, including Wi-Fi.
- All staff, learners and visitors will read and agree an acceptable use policy before being given access to our computer system, IT resources or the internet.

## 7.3 Filtering and monitoring

### 7.3.1 Decision making

- Bilston C of E Primary School governors and SLT have ensured that our *school* has age and ability appropriate filtering and monitoring in place to limit learner's exposure to online risks.
- Changes to the filtering and monitoring approach will be risk assessed by staff with educational and technical experience and, where appropriate, with consent from the leadership team; all changes to the filtering policy are logged and recorded.
- The leadership team will ensure that regular checks are made to ensure that the filtering and monitoring methods are effective and appropriate.
- The governors and leaders are mindful to ensure that "over blocking" does not unreasonably restrict access to educational activities and safeguarding materials.
- All members of staff are aware that they cannot rely on filtering and monitoring alone to safeguard learners; effective classroom management and regular education about safe and responsible use is essential.

### 7.3.2 Appropriate filtering

- Bilston's education broadband connectivity is provided through E Services
- Bilston C of E Primary uses Senso and Lightspeed
  - Lightspeed blocks access to sites which could promote or include harmful and/or inappropriate behaviour or material. This includes content which promotes discrimination or extremism, drugs/substance misuse, malware/hacking, gambling, piracy and copyright theft, pro-self-harm, eating disorder and/or suicide content, pornographic content and violent material.
  - Lightspeed is a member of [Internet Watch Foundation](#) (IWF) and blocks access to illegal Child Abuse Images and Content (CAIC).
  - Senso and Lightspeed integrates the 'the police assessed list of unlawful terrorist content, produced on behalf of the Home Office'
- We work with E Services to ensure that our filtering policy is continually reviewed to reflect our needs and requirements.

- If learners or staff discover unsuitable sites or material, they are required to ***report the concern immediately to a member of staff, who will report the URL of the site to technical staff/services.***
- Filtering breaches will be reported to the DSL (or deputy) and technical staff and will be recorded and escalated as appropriate.
- Parents/carers will be informed of filtering breaches involving learners as appropriate.
- Any access to material believed to be illegal will be reported immediately to the appropriate agencies, such as the IWF, the police and/or CEOP.

### 7.3.3 Appropriate monitoring

- We will appropriately monitor internet use on all setting owned or provided internet enabled devices. This is achieved by:
  - ***physical monitoring (supervision)***
  - ***monitoring internet and web access (E Services inform us of any issues)***
  - ***Senso active/pro-active technology monitoring services.***
- All users will be informed that use of our systems can be monitored and that all monitoring will be in line with data protection, human rights and privacy legislation.
- If a concern is identified via monitoring approaches, we will ***respond in line with the child protection policy.***

## 7.4 Managing personal data online

- Personal data will be recorded, processed, transferred and made available online in accordance with General Data Protection Regulations and Data Protection legislation.
  - Full information can be found in our information security policy.

## 7.5 Security and management of information systems

- We take appropriate steps to ensure the security of our information systems, including:
  - Virus protection being updated regularly.
  - Encryption for personal data sent over the Internet or taken off site (such as via portable media storage) or access via appropriate secure remote access systems.
  - Not using portable media only provided encrypted hard drives.
  - Not downloading unapproved software to work devices or opening unfamiliar email attachments.
  - Preventing, as far as possible, access to websites or tools which could compromise our systems, including anonymous browsing and other filtering bypass tools eg staff will not disable proxy settings whilst in school.
  - The appropriate use of user logins and passwords to access our network.
    - Specific user logins and passwords will be enforced for all users.
  - All users are expected to log off or lock their screens/devices if systems are unattended.

### 7.5.1 Password policy

- All members of staff have their own unique username and private passwords to access our systems; members of staff are responsible for keeping their password private.
- From **Year 2 Summer Term** all learners are provided with their own unique username and private passwords to access our systems; learners are responsible for keeping their password private.
- We require all users to
  - use strong passwords for access into our system.
  - change their passwords if they suspect it has been compromised.
  - not share passwords or login information with others or leave passwords/login details where others can find them.
  - not to login as another user at any time.
  - lock access to devices/systems when not in use.

### 7.6 Managing the safety of our website

- We will ensure that information posted on our website meets the requirements as identified by the DfE.
- We will ensure that our website complies with guidelines for publications including accessibility, data protection, respect for intellectual property rights, privacy policies and copyright.
- Staff or learner's personal information will not be published on our website; the contact details on the website will be our setting address, email and telephone number.
- The administrator account for our website will be secured with an appropriately strong password.
- We will post appropriate information about safeguarding, including online safety, on our website for members of the community.
- All staff will ensure that no children that do not have permissions are on the website

### 7.7 Use of images and videos, including online

- We will ensure that all images and videos shared online are used in accordance with the associated policies, including (but not limited to) data security, acceptable use policies, codes of conduct/behaviour, (use on social media and use of mobile devices is covered later).
- Written permission from parents or carers will be obtained before photographs of students / pupils are published on the school website / social media / local press
- In accordance with guidance from the Information Commissioner's Office, parents / carers are welcome to take videos and digital images of their children at school events for their own personal use (as such use is not covered by the Data Protection Act). To respect everyone's privacy and in some cases protection, these images should not be published / made publicly available on social networking sites, nor should parents / carers comment on any activities involving other students / pupils in the digital / video images.

- Staff and volunteers are allowed to take digital / video images to support educational aims, but must follow school policies concerning the sharing, distribution and publication of those images. Those images should only be taken on school / academy equipment, the personal equipment of staff should not be used for such purposes.
- Students / pupils must not take, use, share, publish or distribute images of others without their permission.
- Photographs published on the website, or elsewhere that include students / pupils will be selected carefully and will comply with good practice guidance on the use of such images.
- Students' / Pupils' full names will not be used anywhere on a website or blog, particularly in association with photographs.

## 7.8 Managing email

- Access to our email systems will always take place in accordance with data protection legislation and in line with other policies, including confidentiality, acceptable use of technology policies and the code of conduct/behaviour policy.
- The forwarding of any chain messages/emails is not permitted.
- Any electronic communication which contains sensitive or personal information will only be sent using secure and encrypted email. Staff should only use recognised school email systems in relation to work.
- Setting email addresses and other official contact details will not be used to set up personal social media accounts.
- Members of the community will immediately tell *the Head teacher* if they receive offensive communication, and this will be recorded in our safeguarding files/records on CPOMS.
- Excessive social email use can interfere with teaching and learning and will be restricted; access to external personal email accounts will only be permitted during designated break time – **Not on school devices.**
- We will have a dedicated email for reporting wellbeing and pastoral issues. This inbox will be managed by designated and trained staff linked to the wellbeing committee managed by: **Mrs B Martin.**

### 7.8.1 Staff email

- All members of staff are provided with an email address and Teams account to use for all official communication; the use of personal email addresses by staff for any official business is not permitted.
- Members of staff are encouraged to have an appropriate work life balance when responding to email, especially if communication is taking place between staff, learners and parents.
- ***Staff will not be expected to respond to Emails/Teams messages outside of normal working hours.***

### 7.8.2 Learner email

- Learners will use a provided email account for educational purposes.



- Learners will agree an acceptable use policy and will receive education regarding safe and appropriate email etiquette before access is permitted.
- Whole-class or group email addresses will be used for communication outside of the setting and for access for Teams.

## 7.9 Educational use of videoconferencing and/or webcams (*TEAMS*)

- Bilston C of E Primary School recognise that videoconferencing *and* use of webcams can be a challenging activity but brings a wide range of learning benefits.
  - All video conferencing *and* webcam equipment will be switched off when not in use and will not be set to auto-answer.
  - All video conferencing equipment connected to the educational broadband network.
  - Videoconferencing contact details will not be posted publicly.
  - Videoconferencing equipment will not be taken off the premises without prior permission from the DSL *and* headteacher.
  - Staff will ensure that external videoconferencing opportunities *and* tools are suitably risk assessed and will ensure that accounts and systems used to access these events are safe and secure.
  - Video conferencing equipment and webcams will be kept securely and, if necessary, locked away or disabled when not in use.

### 7.9.1 Users

- Parents/carers consent will be obtained prior to learners taking part in Microsoft Teams activities.
- Learners will ask permission from a member of staff before making or answering a Teams call or message.
- Videoconferencing will be supervised appropriately, according to the learners age and ability. ***The Teams AUP lists how this will be enforced and achieved.***
- Video conferencing will take place via official and approved communication channels following a robust risk assessment.
- The unique log on and password details for the videoconferencing services will only be issued to members of staff and should be kept securely, to prevent unauthorised access.

### 7.9.2 Content

- When recording a videoconference lesson, it should be made clear to all parties at the start of the conference and written permission will be obtained from all participants; the reason for the recording must be given and recorded material will be stored securely.
- If third party materials are included, we will check that recording is permitted to avoid infringing the third-party intellectual property rights.
- We will establish dialogue with other conference participants before taking part in a videoconference; if it is a non-educational site, staff will check that the material they are delivering is appropriate for the learners.

## 7.11 Management of applications (apps) used to record children's progress

- We use Sheffield Stat to track learners progress and share appropriate information with parents and carers.
- The *Headteacher* will ensure that the use of tracking systems is appropriately risk assessed prior to use, and that use takes place in accordance with data protection legislation, including the General Data Protection Regulations (GDPR) and Data Protection legislation.
- To safeguard learner's data
  - only learner issued devices will be used for apps that record and store learners' personal details, attainment or photographs.
  - personal staff mobile phones or devices will not be used to access or upload content to any apps which record and store learners' personal details, attainment or images.
  - devices will be appropriately encrypted if taken off site, to reduce the risk of a data security breach, in the event of loss or theft.
  - all users will be advised regarding safety measures, such as using strong passwords and logging out of systems.
  - parents and carers will be informed of the expectations regarding safe and appropriate use, prior to being given access; for example, not sharing passwords or images.

## 8. Social Media

### 8.1 Expectations

- The expectations' regarding safe and responsible use of social media applies to all members of Bilston C of E Primary School's community.
- The term social media may include (but is not limited to) blogs, wikis, social networking sites, forums, bulletin boards, online gaming, apps, video/photo sharing sites, chatrooms and instant messenger.
- All members of Bilston C of E Primary School's community are expected to engage in social media in a positive and responsible manner.
  - All members of Bilston C of E Primary School's community are advised not to post or share content that may be considered threatening, hurtful or defamatory to others on any social media service.
- We will control learner and staff access to social media whilst using *school* provided devices and systems on site.
  - The use of social media during *teaching/PPA* hours for personal use *is not* permitted for staff.
  - The use of social media during *school* hours for personal use *is not* permitted for learners.
  - Inappropriate or excessive use of social media during *school* hours or whilst using *school* devices may result in removal of internet access and/or disciplinary or legal action.

- Concerns regarding the online conduct of any member of Bilston C of E Primary School community on social media, will be reported to the DSL and be managed in accordance with our anti-bullying, allegations against staff, behaviour and child protection policies.

## 8.2 Staff personal use of social media

- The safe and responsible use of social media sites will be discussed with all members of staff as part of staff induction and will be revisited and communicated via regular staff training opportunities.
- Safe and professional behaviour will be outlined for all members of staff, including volunteers, as part of our *code of conduct/behaviour policy and acceptable use of technology policy*.

### 8.2.1 Reputation

- All members of staff are advised that their online conduct on social media can have an impact on their role and reputation within school.
  - Civil, legal or disciplinary action may be taken if staff are found to bring the profession or institution into disrepute, or if something is felt to have undermined confidence in their professional abilities.
- All members of staff are advised to safeguard themselves and their privacy when using social media services. Advice will be provided to staff via staff training and by sharing appropriate guidance and resources on a regular basis. This will include, but is not limited to:
  - Setting appropriate privacy levels on their personal accounts/sites.
  - Being aware of the implications of using location sharing services.
  - Opting out of public listings on social networking sites.
  - Logging out of accounts after use.
  - Using strong passwords.
  - Do not like pages on the School Facebook page or Twitter account from a Personal account.
  - Ensuring staff do not represent their personal views as being that of the setting.
- Members of staff are encouraged not to identify themselves as employees of Bilston C of E Primary School's on their personal social networking accounts; this is to prevent information being linked with the setting and to safeguard the privacy of staff members.
- All members of staff are encouraged to carefully consider the information, including text and images, they share and post online. Staff are expected to ensure that their social media use is compatible with their professional role and is in accordance our policies, and the wider professional and legal framework.
- Information and content that staff members have access to as part of their employment, including photos and personal information about learners and their family members or colleagues, will not be shared or discussed on social media sites.
- Members of staff will notify the leadership team immediately if they consider that any content shared on social media sites conflicts with their role.

### 8.2.2 Communicating with learners and parents/carers

- Staff will not use personal social media accounts to contact learners or parents/carers, nor should any contact be accepted.
- All members of staff are advised not to communicate with or add any current or past learners or their family members, as 'friends' on any personal social media sites, applications or profiles.
- Any pre-existing relationships or exceptions which compromise this requirement will be discussed with the DSL and the *headteacher*.
  - Decisions made and advice provided in these situations will be formally recorded in order to safeguard learners, the setting and members of staff.
- If ongoing contact with learners is required once they have left the setting, members of staff will be expected to use existing alumni networks, or use official setting provided communication tools.
- Any communication from learners and parents received on personal social media accounts will be reported to the DSL (or deputy) *and* the *headteacher*.

### 8.3 Learners use of social media

- Safe and appropriate use of social media will be taught to learners as part of an embedded and progressive Online Safety approach via age-appropriate sites and resources.
- We are aware that many popular social media sites are not permitted for use by children under the age of 13, or in some cases higher. As such, we will not create accounts for learners under the required age as outlined in the services terms and conditions.
- Any concerns regarding learners use of social media will be dealt with in accordance with existing policies, including anti-bullying and behaviour.
- Concerns regarding learners use of social media will be shared with parents/carers as appropriate, particularly when concerning underage use of social media services and games.
- Learners will be advised:
  - to consider the benefits and risks of sharing personal details or information on social media sites which could identify them and/or their location.
  - to only approve and invite known friends on social media sites and to deny access to others by making profiles private.
  - not to meet any online friends without a parent/carer or other appropriate adults' permission, and to only do so when a trusted adult is present.
  - to use safe passwords.
  - to use social media sites which are appropriate for their age and abilities.
  - how to block and report unwanted communications.
  - how to report concerns on social media, both within the setting and externally.

### 8.4 Official use of social media

- Bilston C of E Primary School official social media channels are:
  - <https://twitter.com/BilstonCEPri> (Twitter link)

- <https://www.bilstoncofeprimary.co.uk/> (Facebook page link)
- [Bilston Primary School - YouTube](#) (YouTube channel link)
- The official use of social media sites by Bilston C Of E Primary School only takes place with clear educational or community engagement objectives and with specific intended outcomes.
  - The official use of social media as a communication tool has been formally risk assessed and approved by the *headteacher*.
  - Leadership staff have access to account information and login details for our social media channels, in case of emergency, such as staff absence.
- Official social media channels have been set up as distinct and dedicated accounts for official educational or engagement purposes only.
  - Staff use setting provided email addresses to register for and manage official social media channels.
  - Official social media sites are suitably protected and, where possible, run *and* linked to our website.
  - Public communications on behalf of the setting will, where appropriate and possible, be read and agreed by at least one other colleague.
- Official social media use will be conducted in line with existing policies, including but not limited to anti-bullying, image/camera use, data protection, confidentiality and child protection.
- All communication on official social media platforms by staff on behalf of the setting will be clear, transparent and open to scrutiny.
- Parents/carers and learners will be informed of any official social media use, along with expectations for safe use and action taken to safeguard the community.
  - Only social media tools which have been risk assessed and approved as suitable for educational purposes will be used.
  - Any official social media activity involving learners will be moderated.
- Parents and carers will be informed of any official social media use with learners; written parental consent will be obtained, as required.
- We will ensure that any official social media use does not exclude members of the community who are unable or unwilling to use social media channels.

#### 8.4.1 Staff expectations

- Members of staff who follow/like or make comments on our official social media channels will be advised to use dedicated professional accounts where possible, to avoid blurring professional boundaries.
- If members of staff are participating in online social media activity as part of their capacity as an employee of the setting, they will:
  - Sign our social media acceptable use policy.
  - Be aware they are an ambassador for the setting.
  - Be professional, responsible, credible, fair and honest, and consider how the information being published could be perceived or shared.

- Always act within the legal frameworks they would adhere to within the workplace, including libel, defamation, confidentiality, copyright, data protection and equalities laws.
- Ensure appropriate consent has been given before sharing images on the official social media channel.
- Not disclose information, make commitments or engage in activities on behalf of the setting, unless they are authorised to do so.
- Not engage with any private/direct messaging with current or past learners or parents/carers.
- Inform their line manager, the DSL (or deputy) and/or the *Headteacher* of any concerns, such as criticism, inappropriate content or contact from learners.

## 9. Mobile Technology: Use of Personal Devices and Mobile Phones

- Bilston C Of E Primary School recognises that personal communication through mobile technologies is part of everyday life for many learners, staff and parents/carers. Mobile technology needs to be used safely and appropriately within the setting.

### 9.1 Expectations

- All use of mobile technology including mobile phones and personal devices such as tablets, games consoles and wearable technology will take place in accordance with our policies, such as anti-bullying, behaviour and child protection, computing with the law.
- Electronic devices of any kind that are brought onto site are the responsibility of the user.
  - All members of Bilston C of E Primary School community are advised to take steps to protect their mobile phones or personal devices from loss, theft or damage; we accept no responsibility for the loss, theft or damage of such items on our premises.
  - All members of Bilston C of E Primary School community are advised to use passwords/pin numbers to ensure that unauthorised calls or actions cannot be made on their phones or devices; passwords and pin numbers should be kept confidential and mobile phones and personal devices should not be shared.
- Mobile phones and personal devices are not permitted to be used in specific areas within the site such as changing rooms, toilets and swimming pools or classrooms.
- The sending of abusive or inappropriate messages or content via mobile phones or personal devices is forbidden by any member of the community; any breaches will be dealt with in line with our anti-bullying and behaviour policies.
- All members of Bilston C Of E Primary School community are advised to ensure that their mobile phones and personal devices do not contain any content which may be offensive, derogatory or would otherwise contravene our behaviour or child protection policies.

### 9.2 Staff use of personal devices and mobile phones

- Members of staff will ensure that use of personal phones and devices takes place in accordance with the law, as well as, relevant policy and procedures, such as confidentiality, child protection, data security and acceptable use of technology.
- Staff will be advised to
  - keep mobile phones and personal devices in a safe and secure place such as bags during lesson time.
  - keep mobile phones and personal devices switched off or switched to 'silent' mode during lesson times.
  - ensure that Bluetooth or other forms of communication, such as 'airdrop', are hidden or disabled during lesson times.
  - not use personal devices during teaching periods, unless written permission has been given by the *Headteacher* such as in emergency circumstances.
  - ensure that any content bought onto site via mobile phones and personal devices are compatible with their professional role and expectations.
- Members of staff are not permitted to use their own personal phones or devices for contacting learners or parents and carers.
  - Any pre-existing relationships which could undermine this, will be discussed with the DSL (or deputy) and *headteacher*.
- Staff will not use personal devices or mobile phones:
  - to take photos or videos of learners and will only use work-provided equipment for this purpose.
  - directly with learners and will only use work-provided equipment during lessons/educational activities.
- If a member of staff breaches our policy, action will be taken in line with our staff behaviour and allegations policy.
- If a member of staff is thought to have illegal content saved or stored on a mobile phone or personal device, or have committed a criminal offence using a personal device or mobile phone, the police will be contacted and the LADO (Local Authority Designated Officer) will be informed in line with our allegations policy.

### 9.3 Learners use of personal devices and mobile phones

- Learners will be educated regarding the safe and appropriate use of personal devices and mobile phones and will be made aware of boundaries and consequences.
  - Bilston C of E Primary School expects learners' personal devices and mobile phones to be *handed into the office if brought into school and collected at the end of the school day*.
- If a learner needs to contact his/her parents or carers they will be allowed to use a *school phone*. *e.g. the office phone*.
  - Parents are advised to contact their child via the *school* office; exceptions may be permitted on a case-by-case basis, as approved by the *headteacher*.

- Mobile phones or personal devices will not be used by learners during lessons or formal educational time unless as part of an approved and directed curriculum-based activity with consent from a member of staff.
  - The use of personal mobile phones or devices for a specific education purpose does not mean that blanket use is permitted.
  - If members of staff have an educational reason to allow learners to use their mobile phones or personal devices as part of an educational activity, it will only take place when approved by the Leadership Team.
- Mobile phones and personal devices must not be taken into examinations.
  - Learners found in possession of a mobile phone or personal device during school time will be reported to the DSL and Headteacher.
- If a learner breaches the policy, the phone or device will be confiscated and held in a secure place. (*Office Safe for parents to collect*)
  - Staff may confiscate a learner's mobile phone or device if they believe it is being used to contravene our child protection, behaviour or anti-bullying policy.
  - Searches of mobile phone or personal devices will be carried out in accordance with our policy. **Appropriate for schools only and must link to appropriate policy and in line with the DfE '[Searching, Screening and Confiscation](#)' guidance.**
  - Learners mobile phones or devices may be searched by a member of the leadership team, with the consent of the learner or a parent/ carer. Content may be deleted or requested to be deleted, if it contravenes our policies. **Appropriate for schools only and must link to appropriate policy and in line with the DfE '[Searching, Screening and Confiscation](#)' guidance.**
  - Mobile phones and devices that have been confiscated will be released to parents/ carers and then end of the school day.
  - If there is suspicion that material on a learner's personal device or mobile phone may be illegal, or may provide evidence relating to a criminal offence, the device will be handed over to the police for further investigation.

## 9.4 Visitors' use of personal devices and mobile phones

- Parents/carers and visitors, including volunteers and contractors, should ensure that they follow the AUP which states that *personal devices are only permitted within specific areas*)
- Appropriate signage and information is provided Via school screens and AUP Policies. to inform parents/carers and visitors of expectations of use.
- Visitors, including volunteers and contractors, who are on site for regular or extended periods of time are expected to use their mobile phones and personal devices in accordance with our acceptable use of technology policy and other associated policies, including but not limited to anti-bullying, behaviour, child protection and image use.
- Members of staff are expected to challenge visitors if they have concerns and inform the DSL (or deputy) or *Headteacher* of any breaches of our policy.



## 9.5 Officially provided mobile phones and devices (Held By Deputy, Pastoral Manager and Head Teacher).

- Members of staff will be issued with a work phone number and email address, where contact with learners or parents/ carers is required.
- *School* mobile phones and devices will be suitably protected via a passcode/password/pin and must only be accessed or used by members of staff.
- *School* mobile phones and devices will always be used in accordance with the acceptable use of technology policy and other relevant policies.

## 10. Responding to Online Safety Incidents

- All members of the community will be made aware of the reporting procedure for online safety concerns, including breaches of filtering, peer on peer abuse, including cyberbullying and youth produced sexual imagery (sexting), online sexual violence and harassment, online abuse and exploitation and illegal content.
- All members of the community will respect confidentiality and the need to follow the official procedures for reporting concerns.
  - Learners, parents and staff will be informed of our complaints procedure and staff will be made aware of the whistleblowing procedure.
- We require staff, parents, carers and learners to work in partnership with us to resolve online safety issues.
- After any investigations are completed, leadership staff will debrief, identify lessons learnt and implement any policy or curriculum changes, as required.
- If we are unsure how to proceed with an incident or concern, the DSL (or deputy) will seek advice from the Education Safeguarding Service.
- Where there is a concern that illegal activity has taken place, we will contact the police using 101, or 999 if there is immediate danger or risk of harm as appropriate.
- If information relating to a specific incident or a concern needs to be shared beyond our community, for example if other local settings are involved or the wider public may be at risk, the DSL *and Headteacher* will speak with the police *and* the Education Safeguarding Service first, to ensure that potential criminal or child protection investigations are not compromised.

### 10.1 Concerns about learner online behaviour and/or welfare

- The DSL (or deputy) will be informed of all online safety concerns involving safeguarding or child protection risks in line with our child protection policy.
- All concerns about learners will be recorded in line with our child protection policy.
- Bilston C Of E Primary School recognises that whilst risks can be posed by unknown individuals or adults online, learners can also abuse their peers; all online peer on peer abuse concerns will be responded to in line with our child protection and behaviour policies.
- The DSL (or deputy) will ensure that online safety concerns are escalated and reported to relevant partner agencies in line with local policies and procedures.

- Appropriate sanctions and/or pastoral/welfare support will be offered to learners as appropriate. Civil or legal action will be taken if necessary.
- We will inform parents/carers of online safety incidents or concerns involving their child, as and when required.

## 10.2 Concerns about staff online behaviour and/or welfare

- Any complaint about staff misuse will be referred to the *headteacher*, in accordance with our allegations against staff policy.
- Any allegations regarding a member of staff's online conduct will be discussed with the LADO (Local Authority Designated Officer).
- Appropriate disciplinary, civil and/or legal action will be taken in accordance with our staff *behaviour policy/code of conduct as well as AUP's*.
- Welfare support will be offered to staff as appropriate.

## 10.3 Concerns about parent/carer online behaviour and/or welfare

- Concerns regarding parents/carers behaviour and/or welfare online will be reported to the *Headteacher* and/or DSL (or deputy). The *Headteacher* and/or DSL will respond to concerns in line with existing policies, including but not limited to child protection, anti-bullying, complaints, allegations against staff, acceptable use of technology and behaviour policy.
- Civil or legal action will be taken if necessary.
- Welfare support will be offered to parents/carers as appropriate.

# 11. Procedures for Responding to Specific Online Concerns

## 11.1 Online sexual violence and sexual harassment between children

**Guidance will be taken from:** [www.childnet.com/resources/step-up-speak-up/guidance-and-training-for-schools-and-professionals](http://www.childnet.com/resources/step-up-speak-up/guidance-and-training-for-schools-and-professionals)

- Our *headteacher*, DSL and appropriate members of staff have accessed and understood the DfE "[Sexual violence and sexual harassment between children in schools and colleges](#)" (2018) guidance and part 5 of '[Keeping children safe in education](#)' 2019.
  - Full details of our response to peer on peer abuse, including sexual violence and harassment can be found in our child protection policy.
- Bilston C of E primary School recognises that sexual violence and sexual harassment between children can take place online. Examples may include;
  - Non-consensual sharing of sexual images and videos
  - Sexualised online bullying
  - Online coercion and threats
  - 'Upskirting', which typically involves taking a picture under a person's clothing without them knowing, with the intention of obtaining sexual gratification, or causing the victim humiliation, distress or alarm. It is a criminal offence

- Unwanted sexual comments and messages on social media
- Online sexual exploitation
- We will respond to concerns regarding online sexual violence and sexual harassment between children, regardless of whether the incident took place on our premises or using our equipment.
- If made aware of any concerns relating to online sexual violence and sexual harassment, we will:
  - immediately notify the DSL (or deputy) and act in accordance with our child protection and anti-bullying policies.
  - if content is contained on learners personal devices, they will be managed in accordance with the DfE '[searching screening and confiscation](#)' advice.
  - provide the necessary safeguards and support for all learners involved, such as implementing safety plans, offering advice on blocking, reporting and removing online content, and providing appropriate counselling/pastoral support.
  - implement appropriate sanctions in accordance with our behaviour policy.
  - inform parents and carers, if appropriate, about the incident and how it is being managed.
  - If appropriate, make referrals to partner agencies, such as Children's Social Work Service and/or the police.
  - if the concern involves children and young people at a different educational setting, the DSL will work in partnership with other DSLs to ensure appropriate safeguarding action is taken in the wider local community.
    - If a criminal offence has been committed, the DSL (or deputy) will discuss this with the police first to ensure that investigations are not compromised.
  - review the handling of any incidents to ensure that best practice was implemented, and policies/procedures are appropriate.
- Bilston C of E Primary School recognises that internet brings the potential for the impact of any sexual violence and sexual harassment concerns to extend further than the local community, and for a victim or alleged perpetrator to become marginalised and excluded by online communities.
- Bilston C of E primary School recognises the potential for repeat victimisation in the future if abusive content continues to exist somewhere online.
- To help minimise concerns, Bilston C of E primary School will ensure that all members of the community are made aware of the potential social, psychological and criminal consequences of online sexual violence and sexual harassment by implementing a range of age and ability appropriate educational methods as part of our curriculum.
- We will ensure that all members of the community are aware of sources of support regarding online sexual violence and sexual harassment between learners.

## 11.2 Youth produced sexual imagery ("sexting")

- Bilston C of E Primary School recognises youth produced sexual imagery (also known as "sexting") as a safeguarding issue; all concerns will be reported to and dealt with by the DSL (or deputy).

- We will follow the advice as set out in the non-statutory UKCIS guidance: [‘Sexting in schools and colleges: responding to incidents and safeguarding young people’](#)
  - Youth produced sexual imagery or ‘sexting’ is defined as the production and/or sharing of sexual photos and videos of and by young people who are under the age of 18. It includes nude or nearly nude images and/or sexual acts.
  - It is an offence to possess, distribute, show and make indecent images of children. The Sexual Offences Act 2003 defines a child, for the purposes of indecent images, as anyone under the age of 18.
- Bilston C of E Primary School will ensure that all members of the community are made aware of the potential social, psychological and criminal consequences of creating or sharing youth produced sexual imagery by implementing preventative approaches, via a range of age and ability appropriate educational methods. **School RSE and PSHE Policies.**
- We will ensure that all members of the community are aware of sources of support regarding the taking and sharing of youth produced sexual imagery. **School website and Online Safety Page, Twitter and Facebook page will all offer guidance.**
- We will respond to concerns regarding youth produced sexual imagery, regardless of whether the incident took place on site or using setting provided or personal equipment.
- We will not:
  - view any suspected youth produced sexual imagery, unless there is no other option, or there is a clear safeguarding need or reason to do so.
    - If it is deemed necessary, the imagery will only be viewed where possible by the DSL, and any decision making will be clearly documented.
  - send, share, save or make copies of content suspected to be an indecent image/video of a child (i.e. youth produced sexual imagery) and will not allow or request learners to do so.
- If made aware of an incident involving the creation or distribution of youth produced sexual imagery, we will:
  - act in accordance with our child protection policies and the relevant local procedures.
  - ensure the DSL (or deputy) responds in line with the [UKCIS](#) guidance.
  - Store any devices containing potential youth produced sexual imagery securely
    - If content is contained on learners personal devices, they will be managed in accordance with the DfE [‘searching screening and confiscation’](#) advice.
    - If a potentially indecent image has been taken or shared on our network or devices, we will act to block access to all users and isolate the image.
  - carry out a risk assessment in line with the [UKCIS](#) guidance which considers the age and vulnerability of learners involved, including the possibility of carrying out relevant checks with other agencies.
  - inform parents/carers about the incident and how it is being managed and provide support and signposting, as appropriate.
  - make a referral to Children’s Social Work Service and the police, as deemed appropriate in line with the [UKCIS](#) guidance.
  - provide the necessary safeguards and support for learners, such as offering counselling or pastoral support.

- implement appropriate sanctions in accordance with our behaviour policy but taking care not to further traumatise victims where possible.
- consider the deletion of images in accordance with the [UKCIS](#) guidance.
  - Images will only be deleted once the DSL has confirmed that other agencies do not need to be involved and are sure that to do so would not place a child at risk or compromise an investigation.
- review the handling of any incidents to ensure that best practice was implemented; the leadership team will also review and update any management procedures, where necessary.

### 11.3 Online abuse and exploitation (including child sexual abuse and sexual or criminal exploitation)

- Bilston C of E Primary School recognises online abuse and exploitation, including sexual abuse and sexual or criminal exploitation, as a safeguarding issue and all concerns will be reported to and dealt with by the DSL (or deputy), in line with our child protection policy.
- Bilston C of E primary School will ensure that all members of the community are aware of online child abuse and sexual or criminal exploitation, including the possible grooming approaches which may be employed by offenders to target learners, and understand how to respond to concerns.
- We will implement preventative approaches for online child abuse and exploitation via a range of age and ability appropriate education for learners, staff and parents/carers.
- We will ensure that all members of the community are aware of the support available regarding online child abuse and exploitation, both locally and nationally.
- We will ensure that the 'Click CEOP' report button used to report online child sexual abuse is visible and available to learners and other members of our community. *This can be accessed on the school website homepage.*
- If made aware of an incident involving online child abuse and/or exploitation, we will:
  - act in accordance with our child protection policies and the relevant KSCMP procedures.
  - store any devices containing evidence securely.
    - If content is contained on learners personal devices, they will be managed in accordance with the DfE '[searching screening and confiscation](#)' advice.
    - If any evidence is stored on our network or devices, we will act to block access to other users and isolate the content.
  - if appropriate, make a referral to Children's Social Work Service and inform the police via 101, or 999 if a learner is at immediate risk.
  - carry out a risk assessment which considers any vulnerabilities of learner(s) involved, including carrying out relevant checks with other agencies.
  - inform parents/carers about the incident and how it is being managed and provide support and signposting, as appropriate.
  - provide the necessary safeguards and support for learners, such as, offering counselling or pastoral support.

- review the handling of any incidents to ensure that best practice is implemented; leadership team will review and update any management procedures, where necessary.
- We will respond to concerns regarding online abuse and exploitation, regardless of whether the incident took place on our premises or using setting provided or personal equipment.
  - Where possible and appropriate, learners will be involved in decision making. If appropriate, they will be empowered to report concerns themselves with support, for example if the concern relates to online sexual abuse via CEOP: [www.ceop.police.uk/safety-centre/](http://www.ceop.police.uk/safety-centre/)
- If we are unclear whether a criminal offence has been committed, the DSL (or deputy) will obtain advice immediately through the Education Safeguarding Service and/or police.
- If made aware of intelligence or information which may relate to child sexual exploitation (on or offline), it will be passed through to the police by the DSL (or deputy).
- If members of the public or learners at other settings are believed to have been targeted, the DSL (or deputy) will seek advice from the police and/or the Education Safeguarding Service before sharing specific information to ensure that potential investigations are not compromised.

## 11.4 Indecent Images of Children (IIOC)

- Bilston C of E Primary School will ensure that all members of the community are made aware of the possible consequences of accessing Indecent Images of Children (IIOC) as appropriate to the age and ability.
- We will respond to concerns regarding IIOC on our equipment and/or personal equipment, even if access took place off site.
- We will seek to prevent accidental access to IIOC by using an Internet Service Provider (ISP) which subscribes to the Internet Watch Foundation (IWF) block list and by implementing appropriate filtering, firewalls and anti-spam software.
- If we are unclear if a criminal offence has been committed, the DSL (or deputy) will obtain advice immediately through the police and/or the Education Safeguarding Service.
- If made aware of IIOC, we will:
  - act in accordance with our child protection policy and the relevant KSCMP procedures.
  - store any devices involved securely.
  - immediately inform appropriate organisations, such as the IWF and police.
- If made aware that a member of staff or a learner has been inadvertently exposed to indecent images of children, we will:
  - ensure that the DSL (or deputy) is informed.
  - ensure that the URLs (webpage addresses) which contain the suspect images are reported to the IWF via [www.iwf.org.uk](http://www.iwf.org.uk).
  - ensure that any copies that exist of the image, for example in emails, are deleted.
  - report concerns, as appropriate to parents and carers.
- If made aware that indecent images of children have been found on the setting provided devices, we will:



- ensure that the DSL (or deputy) is informed.
- ensure that the URLs (webpage addresses) which contain the suspect images are reported to the IWF via [www.iwf.org.uk](http://www.iwf.org.uk).
- inform the police via 101 or 999 if there is an immediate risk of harm, and Children's Social Work Service, as appropriate.
- only store copies of images (securely, where no one else has access to them and delete all other copies) following a written request from the police.
- report concerns, as appropriate to parents/carers.
- If made aware that a member of staff is in possession of indecent images of children on *school* provided devices, we will:
  - ensure that the *Headteacher* is informed in line with our managing allegations against staff policy.
  - inform the Local LADO and other relevant organisations in accordance with our managing allegations against staff policy.
  - quarantine any devices until police advice has been sought.

## 11.5 Online bullying

- Online bullying, along with all other forms of bullying, will not be tolerated at Bilston C of E primary School.
- Full details of how we will respond to online bullying are set out in our anti-bullying policy. [e5b70e\\_3a6861e5948e461cb1827ad24e287aa1.pdf\(filesusr.com\)](http://e5b70e_3a6861e5948e461cb1827ad24e287aa1.pdf(filesusr.com))

## 11.6 Online hate

- Online hate content, directed towards or posted by, specific members of the community will not be tolerated at Bilston C of E primary School and will be responded to in line with existing policies, including child protection, anti-bullying and behaviour.
- All members of the community will be advised to report online hate in accordance with relevant policies and procedures.
- The police will be contacted if a criminal offence is suspected.
- If we are unclear on how to respond, or whether a criminal offence has been committed, the DSL (or deputy) will obtain advice through the Education Safeguarding Service and/or the police.

## 11.7 Online radicalisation and extremism

- As listed in this policy, we will take all reasonable precautions to ensure that learners and staff are safe from terrorist and extremist material when accessing the internet on site.
- If we are concerned that a learner or adult may be at risk of radicalisation online, the DSL (or deputy) will be informed immediately, and action will be taken in line with our child protection policy.

- If we are concerned that member of staff may be at risk of radicalisation online, the *Headteacher* will be informed immediately, and action will be taken in line with the child protection and allegations policies.



# Responding to an Online Safety Concern Flowchart

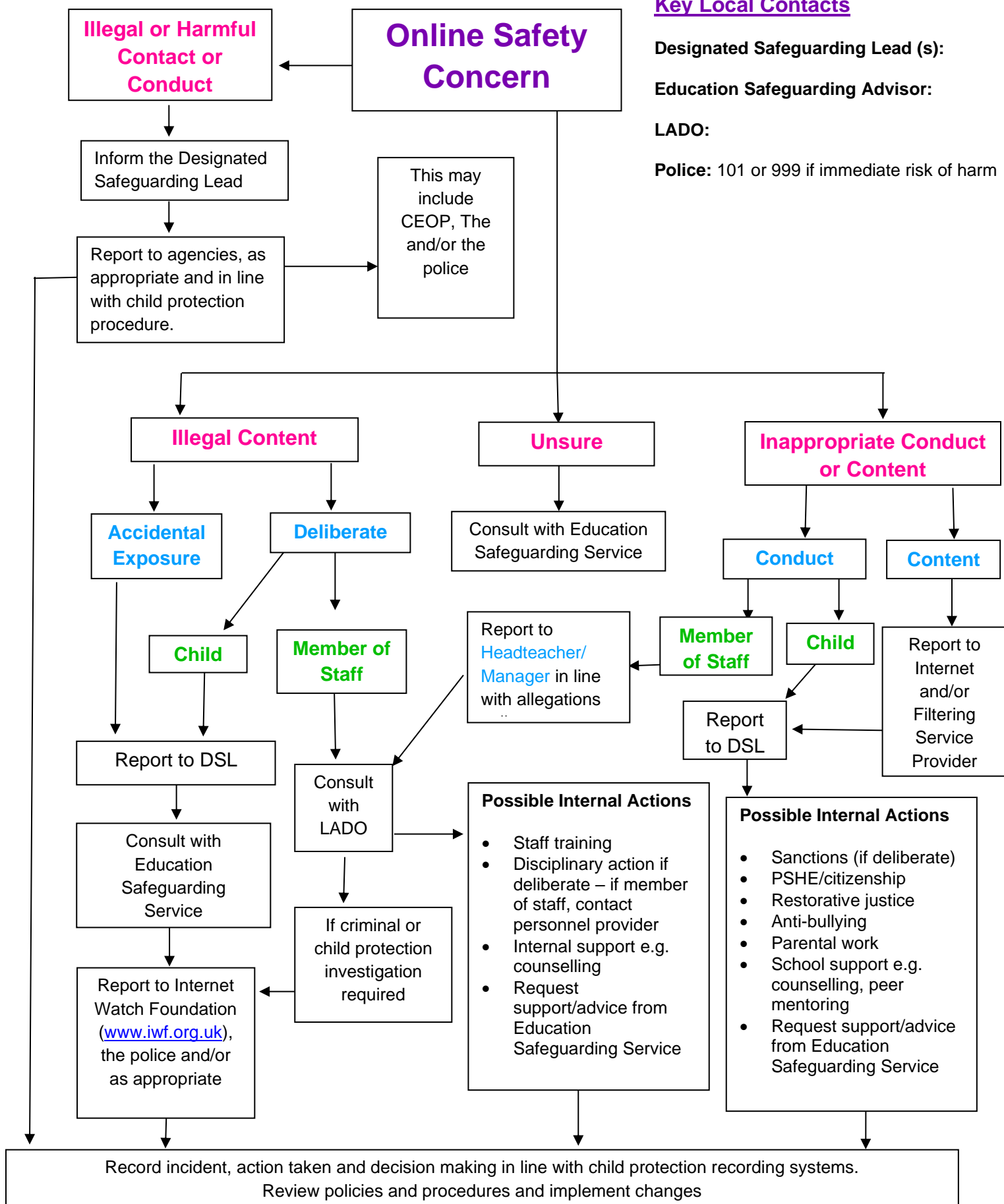
## Key Local Contacts

**Designated Safeguarding Lead (s):**

**Education Safeguarding Advisor:**

**LADO:**

**Police:** 101 or 999 if immediate risk of harm



# Useful Links

## National Links and Resources for Settings, Learners and Parents/carers

- CEOP:
  - [www.thinkuknow.co.uk](http://www.thinkuknow.co.uk)
  - [www.ceop.police.uk](http://www.ceop.police.uk)
- Internet Watch Foundation (IWF): [www.iwf.org.uk](http://www.iwf.org.uk)
- UK Council for Internet Safety (UKCIS): [www.gov.uk/government/organisations/uk-council-for-internet-safety](http://www.gov.uk/government/organisations/uk-council-for-internet-safety)
- UK Safer Internet Centre: [www.saferinternet.org.uk](http://www.saferinternet.org.uk)
  - Professional Online Safety Helpline: [www.saferinternet.org.uk/about/helpline](http://www.saferinternet.org.uk/about/helpline)
  - Report Harmful Content: <https://reportharmfulcontent.com/>
- 360 Safe Self-Review tool for schools: [www.360safe.org.uk](http://www.360safe.org.uk)
- Childnet: [www.childnet.com](http://www.childnet.com)
  - Step Up Speak Up – Online Sexual Harassment Guidance: [www.childnet.com/resources/step-up-speak-up/guidance-and-training-for-schools-and-professionals](http://www.childnet.com/resources/step-up-speak-up/guidance-and-training-for-schools-and-professionals)
  - Cyberbullying Guidance: [www.childnet.com/resources/cyberbullying-guidance-for-schools](http://www.childnet.com/resources/cyberbullying-guidance-for-schools)
- Internet Matters: [www.internetmatters.org](http://www.internetmatters.org)
- Parent Zone: <https://parentzone.org.uk>
- Parent Info: <https://parentinfo.org>
- NSPCC: [www.nspcc.org.uk/online-safety](http://www.nspcc.org.uk/online-safety)
  - ChildLine: [www.childline.org.uk](http://www.childline.org.uk)
  - Net Aware: [www.net-aware.org.uk](http://www.net-aware.org.uk)
- Lucy Faithfull Foundation: [www.lucyfaithfull.org](http://www.lucyfaithfull.org)
- The Marie Collins Foundation: [www.mariecollinsfoundation.org.uk](http://www.mariecollinsfoundation.org.uk)

- Action Fraud: [www.actionfraud.police.uk](http://www.actionfraud.police.uk)
- Get Safe Online: [www.getsafeonline.org](http://www.getsafeonline.org)

