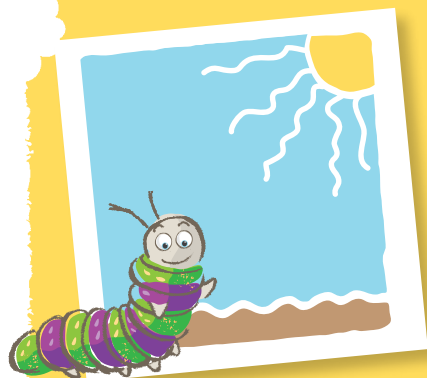




Munching Caterpillars

Plant your fuel
in the sunny,
sheltered spots
in your garden – butterflies
and day-flying moths like
to be nice and warm.

Caring for your Caterpillar Munchbox and Butterfly Fuel Station



- 1. Choose a spot** in your garden where your plant can grow. A sheltered, sunny location if possible. A window box or container will do if you don't have much space!



- 2. Dig a hole** in the soil that is a bit bigger than the pot containing your plant.

- 4. Place the plant** and all the soil from the pot into your hole in the ground. The level of the soil from the pot should be level with the ground.



- 6. Water your plant every day** for the first four to six weeks, until it becomes established. After that you will only need to water it in dry spells.



- 5. Fill around the plant** with the soil you dug out from the ground or with compost. Press this soil down very carefully so that the plant is firmed into the ground.



- 7. Wait and see who comes to visit your plant!** You can tell us what you have planted and find out which butterflies, moths or caterpillars you are helping at

www.munchingcaterpillars.org
Just click on 'Get Planting'



Butterfly Conservation:
Company limited by guarantee, registered in England (2206468)
Registered Office: Manor Yard, East Lulworth, Wareham, Dorset, BH20 5QP
Tel: 01929 400 209
Charity registered in England & Wales (254937) and in Scotland (SCO39268)

www.munchingcaterpillars.org



Butterfly
Conservation
Saving butterflies, moths and our environment



heritage
lottery fund
LOTTERY FUNDED