

Marvellous Mixtures/Materials: All Change — Year 5— Autumn 2



Paper clips and gravel



Rice and peas



Flour and raisins



Soil and stones

Fine sieve



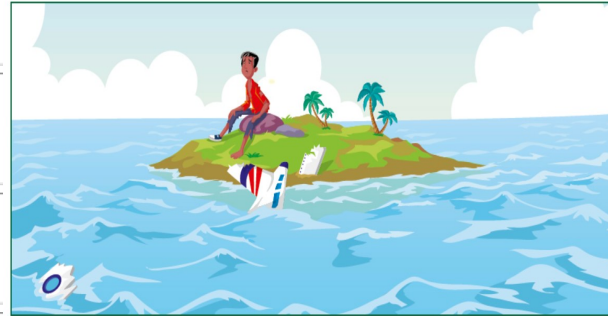
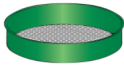
Coarse sieve



Magnet



Garden sieve



1 Discuss what you know already that might help the stranded adventurer.

Reversible change

When water is cold you can't dissolve anything.

If you can't dissolve any more solid the liquid is saturated.

Dissolved coloured sugar is dissolved even though you can still see its colour.

Some solids don't dissolve, but they don't form suspensions either.

Some powders dissolve a bit and what's left stays in the water.

Some solids can dissolve in liquids other than water.

Non-reversible change

True

False

Vocabulary

1	Non-reversible	Not capable of being reversed
2	Particle	A minute portion of matter.
3	Carbon Dioxide	A colourless, odourless gas produced by burning carbon and organic compounds and by respiration.
4	Oxidise	The combination of oxygen with a substance forming oxide
5	Purify	Remove contaminants from.
6	Flammable	Easily set on fire.
7	Solidifies	Make or become hard or solid.
8	Contamination	The action or state of making or being made impure by polluting or poisoning.
9	Impurity	The state or quality of being impure.
10	Microbes	A microorganism, especially a bacterium causing disease or fermentation.
11	Residue	A small amount of something that remains after the main part has gone or

salt water

evaporate

temperature

water droplets

evaporation

hotter

